



# WDR5 Monoclonal Antibody

<b>Catalog No</b>	YP-Ab-03424
<b>Isotype</b>	IgG
<b>Reactivity</b>	Human
<b>Applications</b>	WB;ELISA
<b>Gene Name</b>	WDR5
<b>Protein Name</b>	WD repeat-containing protein 5
<b>Immunogen</b>	Purified recombinant fragment of human WDR5 expressed in E. Coli.
<b>Specificity</b>	WDR5 Monoclonal Antibody detects endogenous levels of WDR5 protein.
<b>Formulation</b>	Ascitic fluid containing 0.03% sodium azide, 0.5% BSA, 50% glycerol.
<b>Source</b>	Monoclonal, Mouse
<b>Purification</b>	Affinity purification
<b>Dilution</b>	Western Blot: 1/500 - 1/2000. ELISA: 1/10000. Not yet tested in other applications.
<b>Concentration</b>	1 mg/ml
<b>Purity</b>	≥90%
<b>Storage Stability</b>	-20°C/1 year
<b>Synonyms</b>	WDR5; BIG3; WD repeat-containing protein 5; BMP2-induced 3-kb gene protein
<b>Observed Band</b>	
<b>Cell Pathway</b>	Nucleus .
<b>Tissue Specificity</b>	Epithelium, Lung, Spleen, Uterus,
<b>Function</b>	function: Accelerates osteoblast differentiation., similarity: Belongs to the WD repeat WDR5/wds family., similarity: Contains 7 WD repeats., subunit: Interacts with HCFC1. Component of the SET1 complex, at least composed of the catalytic subunit (SETD1A or SETD1B), WDR5, WDR82, RBBP5, ASH2/ASH2L and CXXC1/CFP1. Component of MLL-containing complexes (named MLL, ASCOM, MLL2/MLL3 or MLL3/MLL4 complex): at least composed ASH2L, RBBP5, DPY30, WDR5, one or several histone methyltransferases (MLL, MLL2, MLL3 and/or MLL4), and the facultative components MEN1, HCFC1, HCFC2, NCOA6, KDM6A, PAXIP1/PTIP and C16orf53/PA1. Component of a multiprotein complex of 900 kDa containing WDR5.,
<b>Background</b>	This gene encodes a member of the WD repeat protein family. WD repeats are minimally conserved regions of approximately 40 amino acids typically bracketed by gly-his and trp-aspartic acid (GH-WD), which may facilitate formation of heterotrimeric or multiprotein complexes. Members of this family are involved in a variety of cellular processes, including cell cycle progression, signal transduction, apoptosis, and gene regulation. This protein contains 7 WD repeats. Alternatively spliced



transcript variants encoding the same protein have been identified. [provided by RefSeq, Jul 2008],

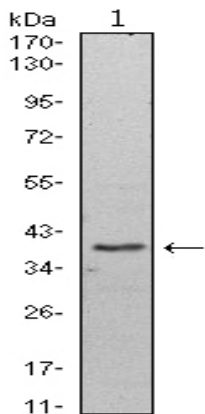
**matters needing attention**

Avoid repeated freezing and thawing!

**Usage suggestions**

This product can be used in immunological reaction related experiments. For more information, please consult technical personnel.

## Products Images



Western Blot analysis using WDR5 Monoclonal Antibody against HeLa (1) cell lysate.